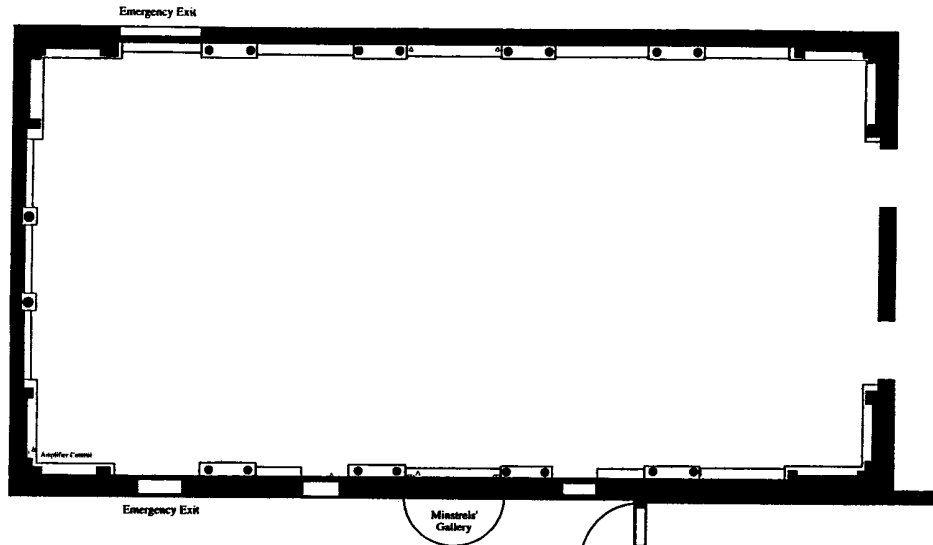


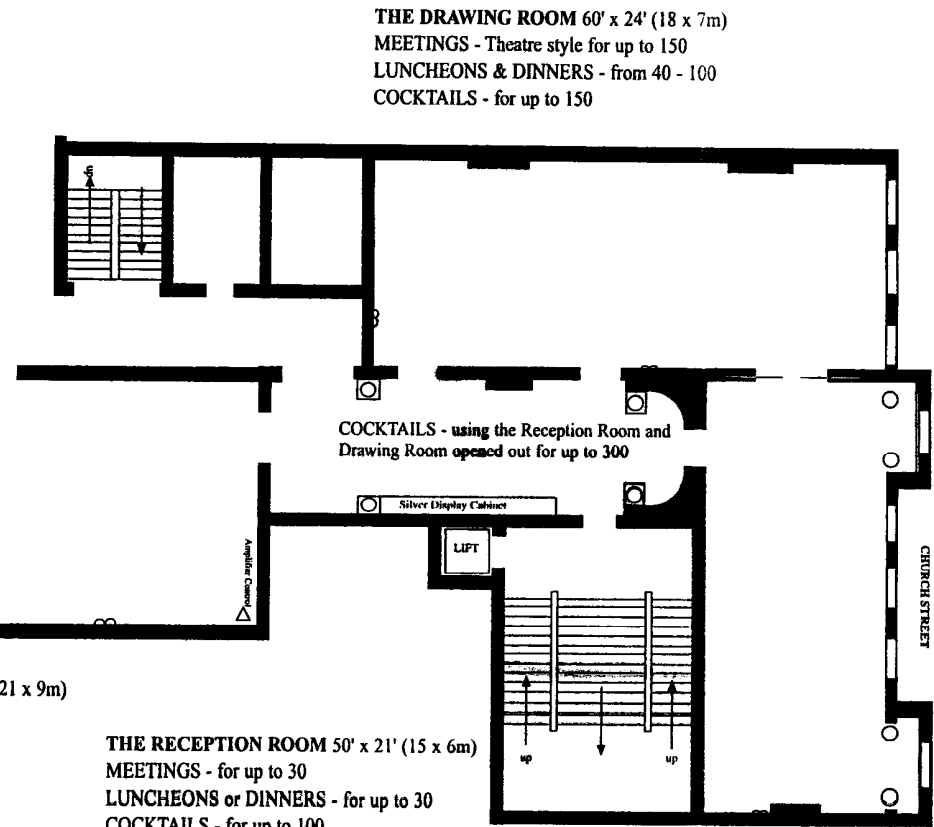
THE CUTLERS' HALL



THE MAIN HALL (First floor) 100' x 50' (30 x 15m)
 MEETINGS - Theatre style for up to 600
 LUNCHEONS & BANQUETS - from 150 - 500

THE HADFIELD HALL (Ground floor, below Banqueting Hall)
 80' x 47' (24 x 14m) + Balcony 11' x 47' (3 x 14m)
 MEETINGS - Theatre style for up to 400
 LUNCHEONS for up to 300

Regularly used for EXHIBITIONS (3750 sq.ft./348 sq.m.) plus the Balcony (500 sq.ft./46 sq.m.)



THE DRAWING ROOM 60' x 24' (18 x 7m)
 MEETINGS - Theatre style for up to 150
 LUNCHEONS & DINNERS - from 40 - 100
 COCKTAILS - for up to 150

THE OLD BANQUETING HALL 70' x 29' (21 x 9m)
 MEETINGS - Theatre style for up to 250
 LUNCHEONS & DINNERS - for up to 120

THE RECEPTION ROOM 50' x 21' (15 x 6m)
 MEETINGS - for up to 30
 LUNCHEONS or DINNERS - for up to 30
 COCKTAILS - for up to 100

The Cutlers' Hall,
 Church Street,
 Sheffield S1 1HG
 Tel: 0114 276 8149
 Fax: 0114 279 8540